



Winter 2023/2024

3 R s : R E D U C E R E U S E R E C Y C L E

Holiday 2023 Closings

BCSWMD offices &

Columbus/Bartholomew Recycling Center

Friday, December 22nd - Christmas Eve
Monday, December 25th - Christmas Day
Friday, December 29th - New Year's Eve
Monday, January 1st - New Year's Day

Bartholomew County Landfill

Saturday, December 23rd - Christmas Eve, closes at 1:00 pm
Monday, December 25th - Christmas Day
Monday, January 1st - New Year's Day

Holiday Recycling



Don't forget - you can recycle old electronics at the Columbus/Bartholomew Recycling Center or Bartholomew County Landfill!
(\$20 fee for computer monitors & TVs)

Tuesday, December 26th to Friday, January 19th during regular days/hours (Monday through Friday, 7:30 am - 4:30 pm)

Columbus/Bartholomew Recycling Center
720 South Mapleton Street

The following items can be recycled:

- **WRAPPING PAPER** - no ribbons, bows, or foil/shiny paper
- **CHRISTMAS LIGHTS** - strand lights only
- **CHRISTMAS TREES** - live trees; remove decorations, lights & stands (bring to the Yard Waste Site adjacent to the Recycling Center)



@BartholomewCoSWMD



@bcswmd



@BCSWMD



www.bcswmd.com



Winter 2023/2024

3 R s : R E D U C E R E U S E R E C Y C L E

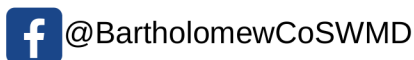
Little Red Schoolhouse and Little Red Schoolhouse Too
Bartholomew County Solid Waste Management District has two facilities with opportunities for teacher reuse.

Little Red Schoolhouse

Is open Monday through Friday 7:30 am to 4:30 pm at the Columbus/Bartholomew County Recycling Center, 720 South Mapleton Street. We have a wide variety of materials including containers, art/craft supplies, and paper supplies. Also, we can collect items from our Recycling Center that may be used for projects.

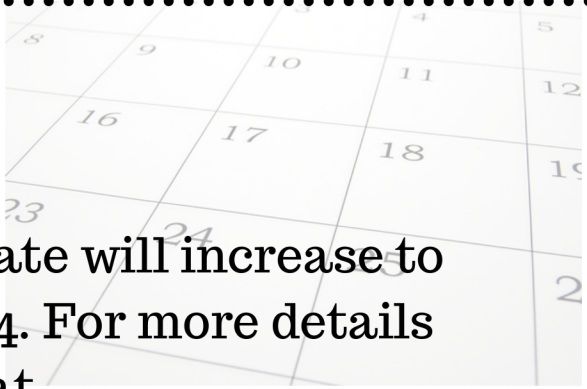
Little Red Schoolhouse Too

Is open quarterly on select days per year located at the Bartholomew County Landfill, 811 East 450 South. We have this larger space available for reusable items such as furniture, art/craft supplies, games, etc. Open dates for 2024- February 3rd, May 4th, August 10th, and November 16th.





3 R s : R E D U C E R E U S E R E C Y C L E



Gate Fee Increase

The Bartholomew County Landfill Gate rate will increase to \$36/ton starting Tuesday, January 2, 2024. For more details about Landfill Disposal visit our website at www.bcswmd.com/landfill.php.

2024 Board Meeting Dates

BCSWMD Board Meetings are routinely held the 4th Thursday every other month with the addition of June, at 8:30 am at the Bartholomew County Government Office Building in the County Council Chambers on the 1st floor of 440 Third Street. 2024 Dates- January 25, March 28, May 23, June 27, July 25, September 26, and November 21. Visit our website for more details, www.bcswmd.com/board.php.

2024 Holiday Calendar

The 2024 Holiday Calendar for the Columbus/Bartholomew Recycling Center, BCSWMD District Offices, Commercial Cardboard Route, and Bartholomew County Landfill are posted to the homepage, www.bcswmd.com.



@BartholomewCoSWMD



@bcswmd



@BCSWMD



www.bcswmd.com

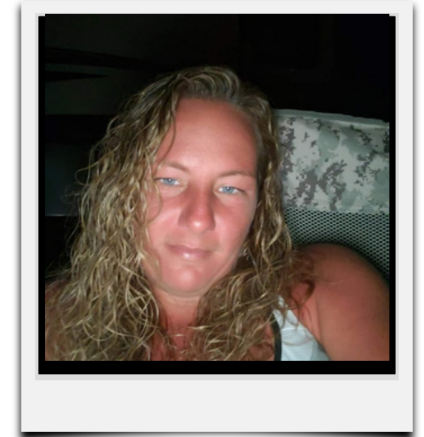


3 R's: REDUCE REUSE RECYCLE

Staff Spotlight:

NAME: Amber Breeden

- **Position:** Recycling Assistant
- **Years at BCSWMD:** 1 1/2 years
- **High School:** Columbus East
- **Hobbies/Interests:** Spending time with family, going to the lake & beach
- **Favorite Food:** Pulled Pork & Mac/Cheese
- **Favorite Color:** Blue
- **Favorite Team:** Kentucky Wildcats
- **Family:** 2 bonus daughters and 3 yr. old Pittie Mix



Upcoming Events

Dec. 22- Christmas Eve
Holiday (Ctr./Offices Closed)

Dec. 26- Jan. 19 Holiday
Recycling at Center

Jan. 15- MLK Day
(Ctr./Offices Closed)

Dec. 23- Christmas Eve
Holiday (Landfill and
Convenience Stations close
at 1)

Dec. 29- New Year's Eve
Holiday (Ctr./Offices Closed)

Jan. 25- Board Meeting
(8:30 am County GOB)

Jan. 1- New Year's Day (All
BCSWMD Facilities Closed)

Feb. 19- President's Day
(Ctr./Offices Closed)

Dec. 23- Christmas Day
Holiday (All BCSWMD
Facilities Closed)

